



City of Marina

Introduction to Redistricting

July 6, 2021

Dr. Jeff Tilton, Senior Consultant
National Demographics Corporation

Redistricting Process

Step	Description
Two Initial Hearings July 6 & September 21	<ul style="list-style-type: none">• Held prior to release of draft maps.• Educate, solicit input on the communities in the Districts.
Census Data Release Mid/Late August	<ul style="list-style-type: none">• Census Bureau releases official 2020 Census population data.
California Data Release Early October 2021	<ul style="list-style-type: none">• California Statewide Database releases California's official 'prisoner-adjusted' 2020 redistricting data.
Engagement Workshops November 19 & 20 <i>Community Center</i>	<ul style="list-style-type: none">• November 19, 6 – 8 p.m.• November 20, 10 a.m. – 12 p.m.
Draft Map Hearing January 4 (Virtual)	<ul style="list-style-type: none">• Discuss and revise the draft maps and to discuss the election sequence.• Deadline to submit drafts: December 21, 2021, 5 p.m.
Draft Map Hearing February 15	<ul style="list-style-type: none">• Discuss and revise the draft maps and to discuss the election sequence.• Deadline to submit drafts: February 1, 2022, 5 p.m.
Map Adoption By April 17, 2022	<ul style="list-style-type: none">• Final map must be posted at least 7 days prior to adoption.• Map adopted via ordinance.

Redistricting Rules and Goals

1. Federal Laws

Equal Population
Federal Voting Rights Act
No Racial Gerrymandering



2. California Criteria for Cities

Geographically contiguous
Undivided neighborhoods and “communities of interest”
(Socio-economic geographic areas that should be kept together)
Easily identifiable boundaries
Compact
(Do not bypass one group of people to get to a more distant group of people)

Prohibited:

“Shall not favor or discriminate against a political party.”

3. Other Traditional Redistricting Principles

Minimize voters shifted to different election years
Respect voters’ choices / continuity in office
Future population growth
Preserving the core of existing districts

Defining Neighborhoods

1st Question: What is your neighborhood?

2nd Question: What are its geographic boundaries?

Examples of physical features defining a neighborhood boundary:

- Natural neighborhood dividing lines, such as highway or major roads, rivers, canals and/or hills
- Areas around parks or schools
- Other neighborhood landmarks

In the absence of public testimony, planning records and other similar documents may provide definition.



Beyond Neighborhoods: Defining Communities of Interest

1st Question: What defines your community?

- Geographic Area, plus
- Shared issue or characteristic
 - Shared social or economic interest
 - Impacted by county policies
- Tell us “your community’s story”

2nd Question: Would this community benefit from being “included within a single district for purposes of its effective and fair representation”?

- Or would it benefit more from having multiple representatives?

Definitions of Communities of Interest may not include relationships with political parties, incumbents, or political candidates.

Beyond Neighborhoods: Communities

Under the California Elections Code, “community of interest” has a very specific definition in the context of districting and redistricting cities and counties:

A “community of interest” is a population that shares common social or economic interests that should be included within a single district for purposes of its effective and fair representation.

Communities of interest do not include relationships with political parties, incumbents, or political candidates.

(emphasis added)

Possible Neighborhoods / Communities

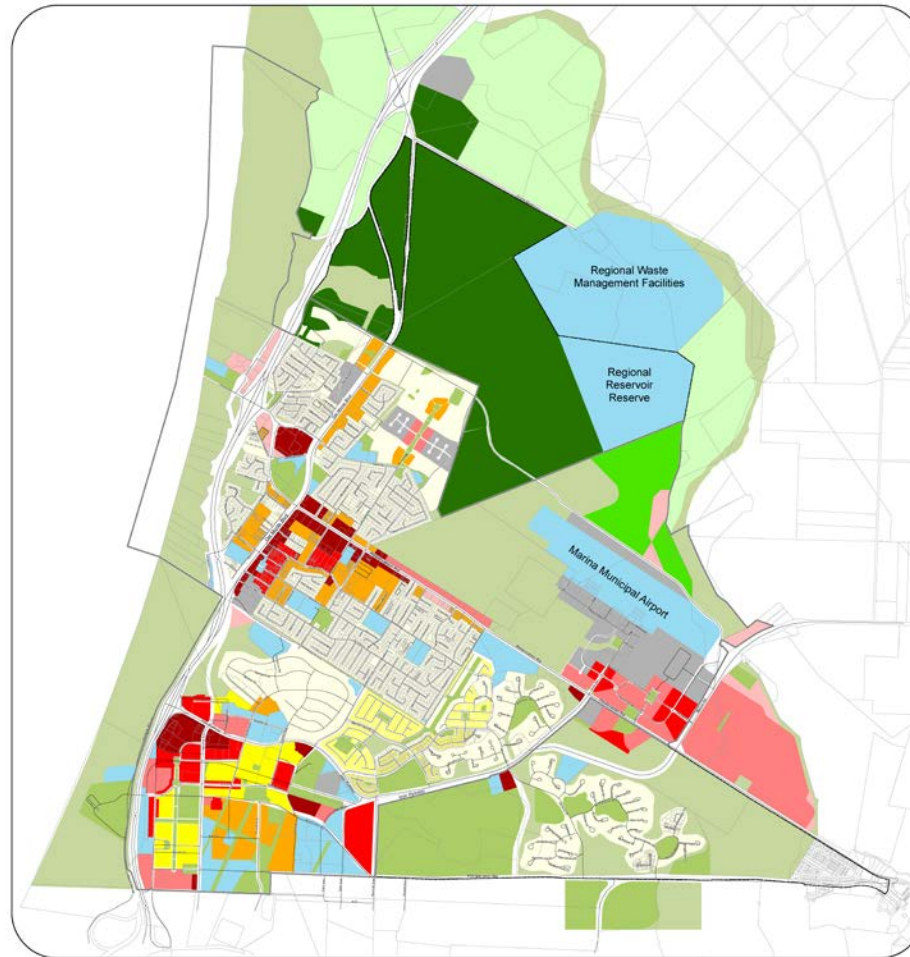


Figure 2.2
Updated 9/27/2011



GENERAL PLAN LAND USE MAP



Public Mapping and Map Review Tools

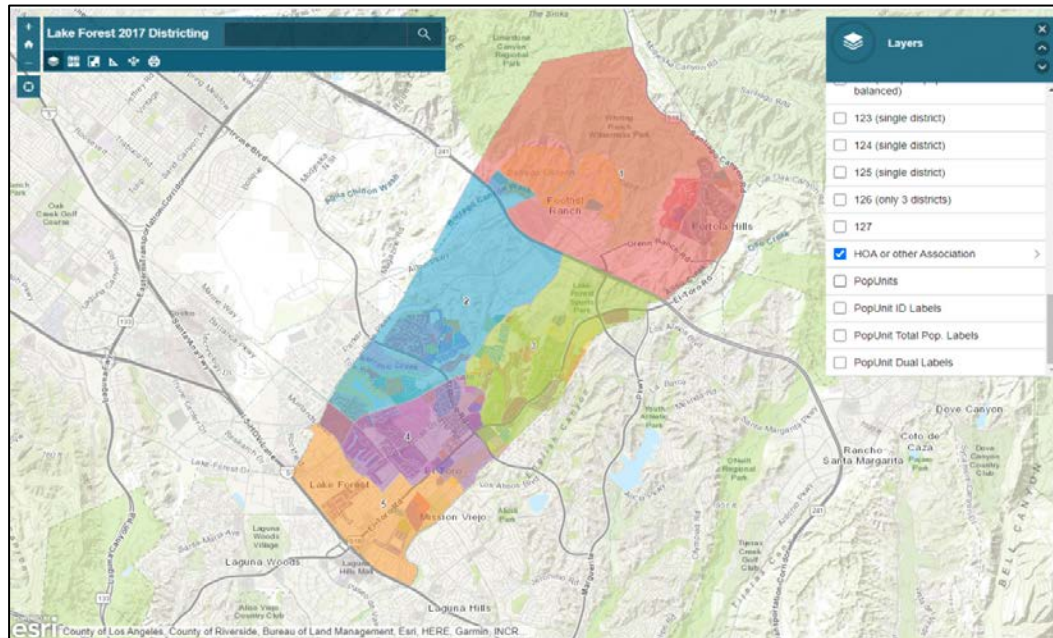
- Different tools for different purposes
- Different tools for different levels of technical skill and interest
 - Simple “review draft maps” tool
 - Easy-to-use “Draw your neighborhood” tool
 - Paper- and Excel-based simple “Draw a draft map” tools
 - Powerful, data-rich “Draw a draft map” tool

Whether you use the powerful (but complicated) online mapping tool, Excel, the paper kit, or just draw on a napkin, we welcome your maps!

Simple Map Review Tool

Online Interactive Review Map

- ESRI's "ArcGIS Online" – similar to Google Maps in ease of use
- Used to review, analyze and compare maps, not to create them
- Includes overlays of “community of interest” and other data



Paper “Public Participation Kit”

- 



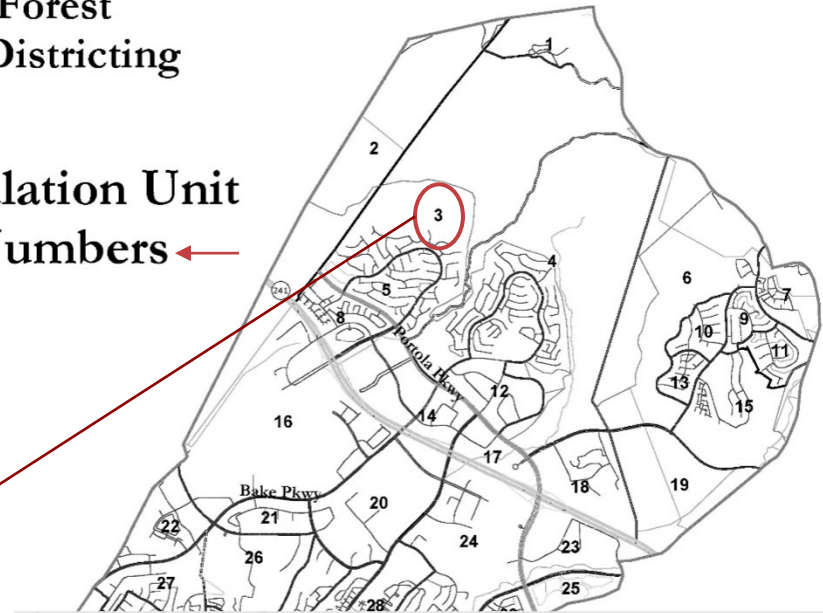
Simple Map Drawing Tool + Excel Supplement

“Public Participation Kit”

- For those who know Excel and do not wish to use online tools
- Adds CVAP data
- Excel does the math

Lake Forest 2017 Districting

Population Unit
ID Numbers ←



AutoSave Off Lake Forest 5-district Kit_ENG.xlsx

File Home Insert Page Layout Formulas Data Review View Help Acrobat

Clipboard Font Alignment Number

	A	B	C	D	E	F	G	H	I	J	K	L	M	N	O	P	Q	R	S	T	U	V
1		Pop	Total Population				Voting Age Population				Citizen Voting Age Population				Nov. 2014 Registration							
2		Unit	Tot. Pop.	Hisp	NH	Blk	NH	Asn	total	Hisp	NH	Blk	NH	Asn	tot	Hisp	NH	Blk	NH	Asn	tot	
3		1	1,216	642	557	18	15	873	397	442	12	831	390	441	0	0	574	195	7	3	245	
4		2	2,367	642	1,053	43	96	1,784	741	899	74	1,915	730	1,140	0	45	1,299	435	14	7	555	
5		3	1,643	1,068	278	42	25	1,036	741	236	15	400	235	145	0	20	505	286	3	4	161	
6		4	1,768	734	855	62	84	1,272	464	685	62	1,231	461	639	19	111	1,022	366	11	11	391	
7		5	2,001	209	1,655	14	79	1,639	144	1,392	64	1,511	88	1,337	12	38	1,776	146	46	7	1,089	
8		6	612	56	499	4	39	517	37	440	26	471	22	423	3	15	525	38	15	2	337	
9		7	1,753	1,180	541	20	16	1,745	767	474	10	780	332	440	0	0	777	278	7	4	241	

Suns by District Assigned

City of San Buenaventura 2017 Public Participation Kit

enter your name here

		Counts							Percentages										
Group	Category	1	2	3	4	5	6	7	Unassigned	Total	1	2	3	4	5	6	7	Unassigned	Total
Total Population	Tot. Pop.	0	0	0	0	0	0	0	107,197	107,197	0	-100%	-100%	-100%	-100%	-100%	-100%	-100%	0.00%
	Deviation from Ideal	-15,314	-15,314	-15,314	-15,314	-15,314	-15,314	-15,314	0	0	-100%	-100%	-100%	-100%	-100%	-100%	-100%	-100%	0.00%
	Hisp	0	0	0	0	0	0	0	34,182	34,182	0	0	0	0	0	0	0	0	32%
	NH Whit	0	0	0	0	0	0	0	64,204	64,204	0	0	0	0	0	0	0	0	60%
	NH Blk	0	0	0	0	0	0	0	1,919	1,919	0	0	0	0	0	0	0	0	2%
	NH Asn	0	0	0	0	0	0	0	4,530	4,530	0	0	0	0	0	0	0	0	4%
Voting Age Populations	Total VAP	0	0	0	0	0	0	0	53,090	53,090	0	0	0	0	0	0	0	0	51%
	Hisp	0	0	0	0	0	0	0	22,928	22,928	0	0	0	0	0	0	0	0	28%
	NH Whit	0	0	0	0	0	0	0	53,657	53,657	0	0	0	0	0	0	0	0	60%
	NH Blk	0	0	0	0	0	0	0	3,461	3,461	0	0	0	0	0	0	0	0	2%
	NH Asn	0	0	0	0	0	0	0	77,063	77,063	0	0	0	0	0	0	0	0	73%
	Total CVAP	0	0	0	0	0	0	0	18,936	18,936	0	0	0	0	0	0	0	0	21%
Gravies Voting Age Population	Hisp	0	0	0	0	0	0	0	32,843	32,843	0	0	0	0	0	0	0	0	40%
	NH Whit	0	0	0	0	0	0	0	1,673	1,673	0	0	0	0	0	0	0	0	2%
	NH Blk	0	0	0	0	0	0	0	2,630	2,630	0	0	0	0	0	0	0	0	14%
	NH Asn	0	0	0	0	0	0	0	63,996	63,996	0	0	0	0	0	0	0	0	33%
	Total Reg.	0	0	0	0	0	0	0	13,374	13,374	0	0	0	0	0	0	0	0	1%
	Hisp	0	0	0	0	0	0	0	1,890	1,890	0	0	0	0	0	0	0	0	2%
Non-2014 Population	Total	0	0	0	0	0	0	0	463	463	0	0	0	0	0	0	0	0	3%
	Hisp	0	0	0	0	0	0	0	30,445	30,445	0	0	0	0	0	0	0	0	28%
	NH Whit	0	0	0	0	0	0	0	4,217	4,217	0	0	0	0	0	0	0	0	11%
	NH Blk	0	0	0	0	0	0	0	151	151	0	0	0	0	0	0	0	0	4%
	NH Asn	0	0	0	0	0	0	0	164	164	0	0	0	0	0	0	0	0	4%
	Total	0	0	0	0	0	0	0	0	0	0	0	0	0	0	0	0	0	0

Submitter's Comments about the plan:

I think this map makes sense because ...

Instructions

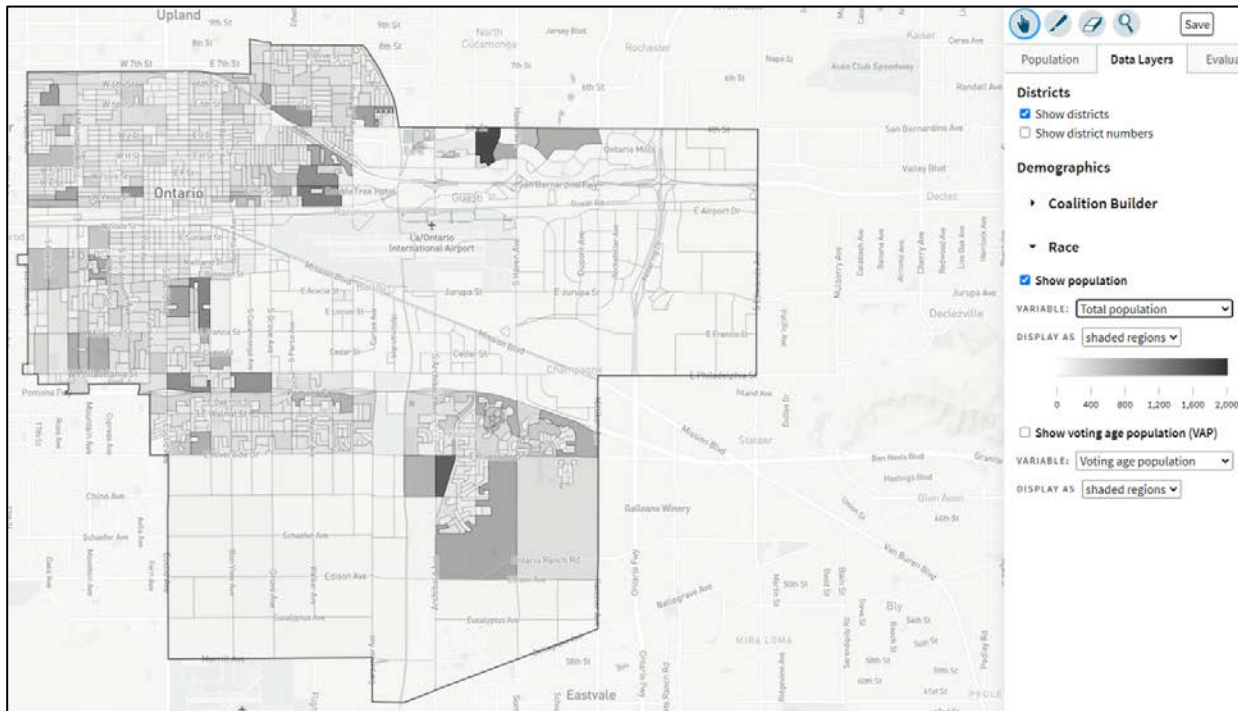
Assignments

7 district balance

DistrictR

“Draw Your Community of Interest” focus

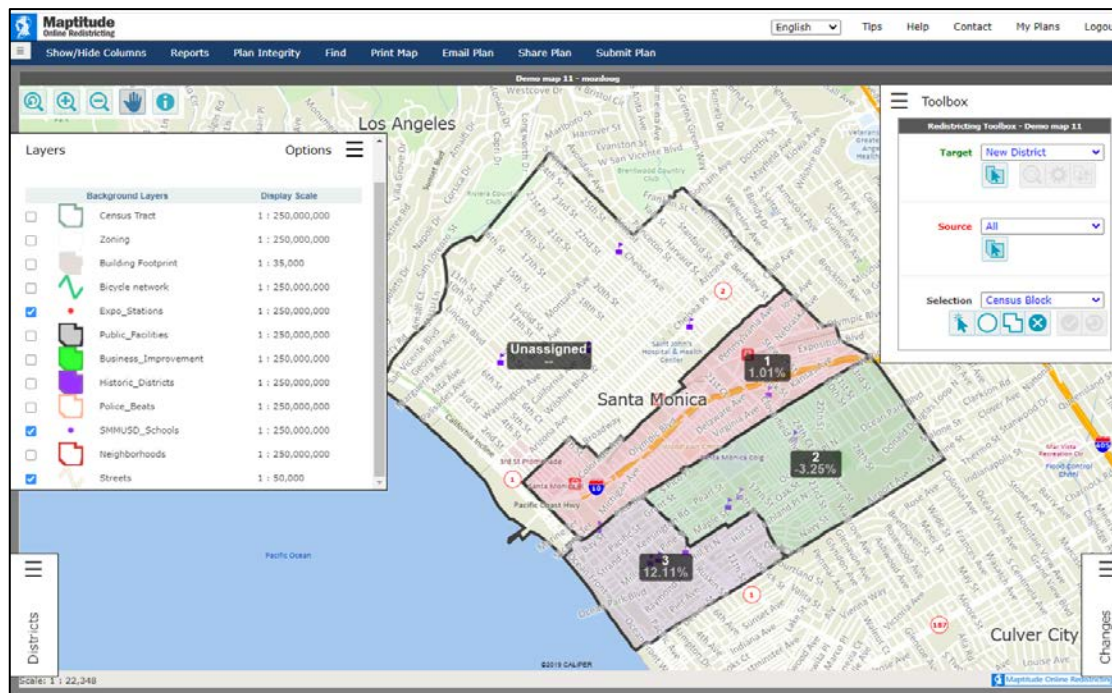
- Also includes simple district-mapping tool
- Only available in English
- Similar external options: Representable.org, DrawMyCACommunity.org



Caliper's “Maptitude Online Redistricting”

Full Database, Powerful Online Mapping Tool

- Powerful, common, data-rich online tool
- Six language options: English, Spanish, Portuguese, Vietnamese, Mandarin and Korean
- [Quick Start Guide](#)



Share Your Thoughts

Website

www.MapMarina.org

Phone

831.884.1278

Email

RedistrictingMarina@cityofmarina.org

Public Hearing & Discussion

- What is your neighborhood and what are its boundaries?
- What other notable areas are in the City, and what are their boundaries?
- Any questions about the mapping tools?

SECOND PUBLIC HEARING

Council Discussion, then Action:

Vote on areas that meet each AB 849 definition:

- “neighborhoods”
- “communities of interest . . . that should be included within a single district for purposes of its effective and fair representation.”